

ICEYE

NEAR REAL-TIME SITUATIONAL AWARENESS FOR WILDFIRES

ADDRESSING A MULTI-BILLION DOLLAR PROBLEM

There is no doubt that climate change is impacting the frequency and severity of wildfires worldwide. Even though wildfire risk is included in standard homeowner insurance policies, modelling wildfire risk remains challenging. This is because of the ambient environmental conditions such as air temperature, humidity, or the unpredictable role of the human factor in both initiating and suppressing fires.



Climate change is increasing the occurrence of wildfires globally



Between 1980 and 2021, the US alone had 20 catastrophic wildfires (16 of them happened in the past 2 decades), that caused more than \$1 billion in damage each



99 million people, or one-third of the US population are at risk, living in the Wildland Urban Interface (WUI)

WHAT IF YOU COULD UNDERSTAND WILDFIRE DAMAGE WITHIN HOURS VS. DAYS?

Owning the world's largest synthetic-aperture radar (SAR) constellation, ICEYE combines earth observation insights from space with advanced data analytics and machine learning. As a result, for the first time in history, we can provide accurate and immediate, building-level insights into the situation on the ground.

ICEYE WILDFIRE SOLUTION

PRECISE

Building -level impact data

CONSISTENT

Acquire data regardless of weather, light and smoke conditions

RELIABLE

Able to capture every wildfire catastrophe in the US

TIMELY

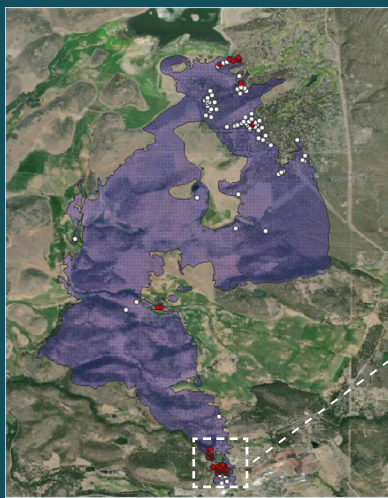
Delivers data every 24 hours during a given wildfire event

DELIVER RADICALLY BETTER BUSINESS AND SERVICE OUTCOMES WITH ICEYE

Until now, when aerial optical imagery was available for a wildfire event, insurers often had to scan through the images and annotate them by themselves in order to determine if their individual properties were impacted, which was tedious and took time.

NO DAMAGE
DAMAGE

AFFECTED AREA



▶ With ICEYE's radar technology, you can **take out the guesswork** of looking at news reports and aerial optical imagery, and reduce the stress on your team who is working under extreme time pressure. This allows your organization as a whole to respond to events faster and more efficiently which saves operational costs and also provides better customer service and help to size losses.

▶ ICEYE's Wildfire building damage assessment product delivers the **output in a vector format** (either latitude, longitude points or building footprints) with a binary classification of damage ('destroyed'/'undamaged') per location, within 24 hours.

✓ INCREASE POLICYHOLDER SAFETY

✓ ACCELERATE CLAIMS

✓ SIZE LOSSES BETTER

TALK TO OUR SOLUTIONS SALES TEAM

WWW.ICEYE.COM/SOLUTIONS/CONTACT

